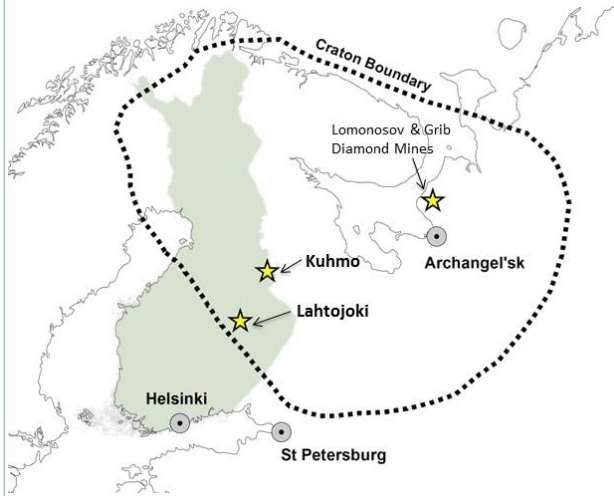


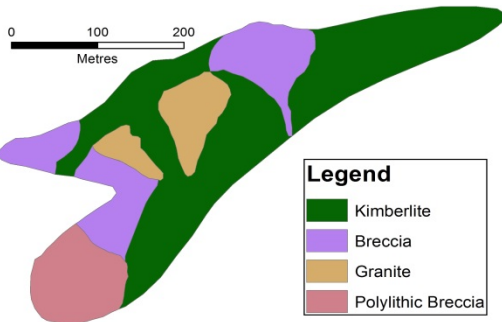
KARELIAN CRATON



KARELIAN CRATON

SEITAPERÄ

- ◆ Macro and Micro diamonds from drill core
- ◆ 6.9ha kimberlite defined
- ◆ Largest known kimberlite in Finland
- ◆ Abundant mantle xenoliths in kimberlite



SEITAPERÄ KIMBERLITE PIPE (KUHMO)

KARELIAN

DIAMOND RESOURCES



HIGH GEM QUALITY DIAMONDS FROM LAHTOJOKI

Karelian Diamond Resources plc

3300 Lake Drive

Citywest Business Campus

Dublin 24

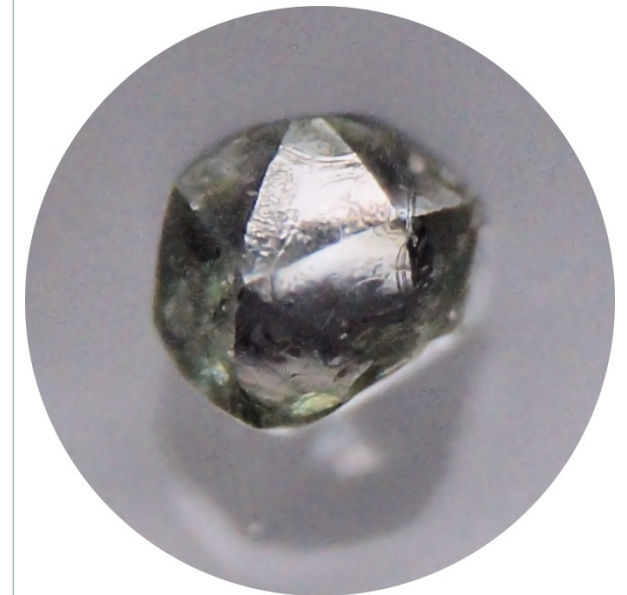
Ireland

Tel: +353 (0)1 479 6182

www.kareliandiamondresources.com

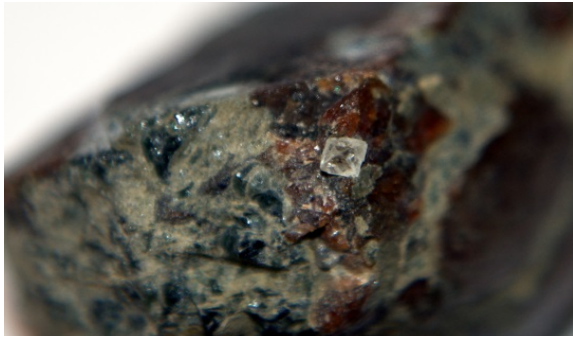
KARELIAN

DIAMOND RESOURCES



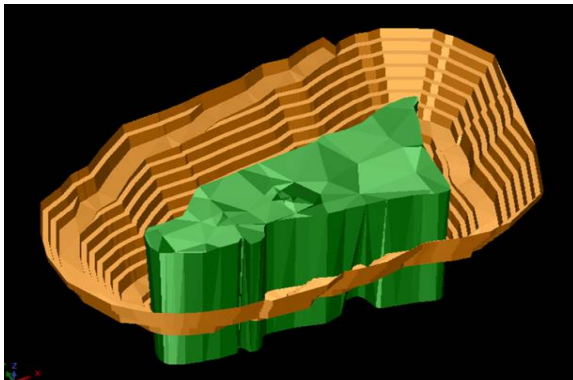
**DIAMOND
DISCOVERED BY
KARELIAN DIAMOND
RESOURCES**

LAHTOJOKI DIAMOND DEPOSIT



LAHTOJOKI DIAMOND IN MANTLE XENOLITH

- ◆ Lahtojoki Mining Concession held by Karelian Diamond Resources
- ◆ PEA completed – 5m tonnes, microdiamond data suggests grade of 40cpt
- ◆ High percentage of gem quality diamonds
- ◆ Additional diamondiferous resource potential in the area



CONVENTIONAL OPEN PIT

KUHMO DIAMOND DISCOVERED BY KARELIAN DIAMONDS IN TILL SAMPLE



VIEWS OF THE KUHMO DIAMOND FROM DIFFERENT SIDES

- ◆ Colour greenish
- ◆ 0.8mm in diameter
- ◆ Forming a 12-sided, curved and twinned dodecahedron
- ◆ Sparkling clear crystal with clean faces
- ◆ Search ongoing for source. Proximity suggested by 98 kimberlite indicator minerals in a till sample

KARELIAN
DIAMOND RESOURCES

RIIHIVAARA KIMBERLITE BODY NEW KIMBERLITE DISCOVERED IN KUHMO BY KARELIAN DIAMONDS



KIMBERLITE DISCOVERED BY KARELIAN DIAMONDS

- ◆ First new kimberlite body discovered in Finland in over 10 years
- ◆ Indicator Mineral analysis show that the kimberlite is likely to be diamondiferous
- ◆ Further diamond exploration targets identified in the immediate area